



# ONE MISSION, MANY VOICES

Uniting the Michigan  
Home Visiting Community

2026 MICHIGAN HOME VISITING CONFERENCE

**August 12-14, 2026**

GRAND TRAVERSE RESORT - ACME, MI

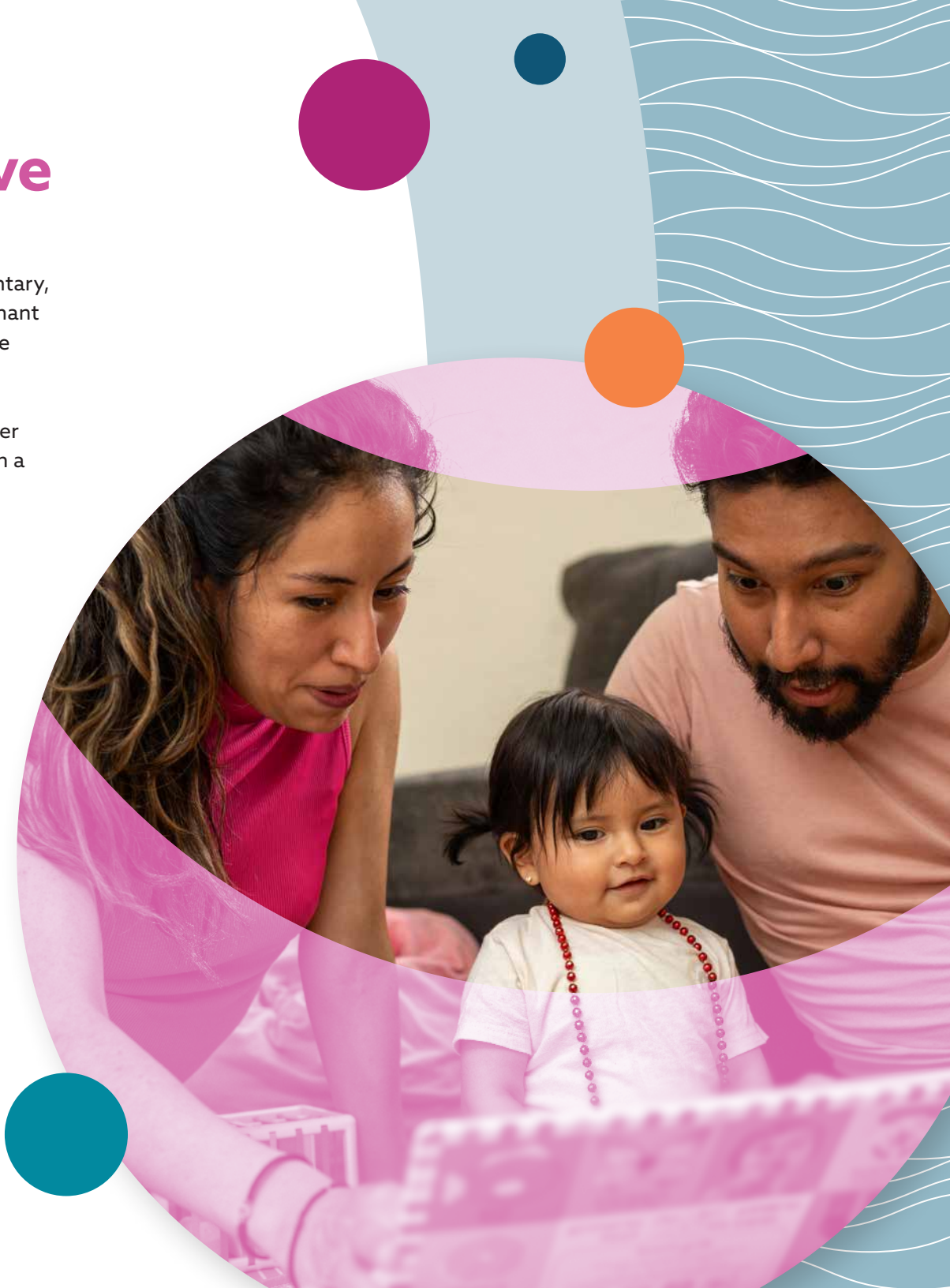
## Exhibitor Information



# About the Michigan Home Visiting Initiative

Michigan's Early Childhood Home Visiting programs provide voluntary, prevention-focused family support services in the homes of pregnant women and families with children aged 0-5. Early Childhood Home Visiting programs connect trained professionals (such as nurses, social workers, early childhood, and family support workers) with mothers and families to nurture, support, coach, educate, and offer encouragement with the goal that all children grow and develop in a safe and stimulating environment.

Early Childhood Home Visiting programs are designed to provide support to parents and caregivers and to connect them to community resources and services. By concentrating on building trust with families, providers work to develop positive interactions focused on the importance of maternal health before, during, and after pregnancy as well as parent/child interactions that lead to robust child development and school readiness. Working in a one-on-one environment, providers encourage and assist families in caring for infants and in building strong, healthy relationships with their toddlers and young children. The Michigan Home Visiting Initiative is part of Michigan's Early Childhood System, and is committed to offering all children a great start.



# About the 2026 Michigan Home Visiting Conference

The 2026 Michigan Home Visiting Conference is a conference for home visitors, administrators, supervisors, and parent leaders in Michigan's Home Visiting programs. This year's conference is designed to increase the knowledge and skill sets of those who are associated with in-home family support programs, resulting in positive community and family outcomes.

Many of our attendees are experienced home visitors that are looking for a higher level of education and ways to implement it into their work.

The 2026 Michigan Home Visiting Initiative (MHVI) Conference is an opportunity for home visiting professionals to come together to support one another and learn about the importance of the work that we are doing to promote unity and collaboration with a shared purpose. The focus for the 2026 Home Visiting Conference is: **One Mission, Many Voices: Uniting the Michigan Home Visiting Community**. The conference serves as a space to celebrate the strength of our partnerships with families and deepen collaboration across the home visiting system. Conference sessions will bring home visitors, administrators, and supervisors together to learn from one another and explore how collaboration across roles and perspectives can strengthen Michigan's home visiting community and lead to better outcomes for families.

## Target Audience

We anticipate approximately 600 attendees, including: home visitors, parents, supervisors, and administrators. These are the people who purchase, use, and recommend the items you produce or services that you offer.

## Return on Investment

Joining us for the 2026 Michigan Home Visiting Conference will showcase your commitment to supporting the efforts of Michigan's Home Visitors in keeping current and up-to-date on the tools and information they need to support families who live in disadvantaged areas.

Research shows that home visiting provides a positive return on investment to society through savings in public expenditures on emergency room visits, child protective services and special education, as well as increased tax revenue from parents' earnings.

By equipping parents with the skills they need to support the cognitive, social emotional and physical health and development of their children, the Home Visiting program works as part of a prenatal to age five continuum.



OVER  
**600**  
EXPECTED  
ATTENDEES

Visit [mhvconference.com](https://mhvconference.com) for more information.

# Sponsorship Opportunities

## GOLD Level \$2,000

- Four complimentary registrations to attend the conference
- Two complimentary exhibit tables
- Large logo on Thank You signage
- Featured on conference website

## SILVER Level \$1,000

- Two complimentary registrations to attend the conference
- Complimentary exhibit table
- Medium logo on Thank You signage

## BRONZE Level \$750

- One complimentary registration to attend the conference
- Complimentary exhibit table
- Small logo on Thank You signage

### Additional Opportunities:

Participation opportunities for the Michigan Home Visiting Conference Include:

- Breaks & Meal Opportunity
- Network Reception Opportunity
- Participant Gift Item

For premium sponsorship opportunities please contact Corey at [cstarmer@mphi.org](mailto:cstarmer@mphi.org)



**Registration Deadline:**  
**July 10, 2026**

**CLICK HERE FOR  
SPONSOR REGISTRATION**

# Exhibiting Opportunities

## You Will Receive:

- 6' x 3' covered and skirted table, with two chairs
- Sign with your company's name
- One complimentary registration
- Ability to attend any of the sessions offered
- Networking with participants

## Your Cost:

- For-Profit Fee ..... \$500
- For-Profit Fee w/ Electricity ..... \$550
- Non-Profit Organization Fee ..... \$250
- Non-Profit Organization Fee w/Electricity \$300
- MDHHS Organization Fee ..... \$150
- MDHHS Organization Fee w/Electricity .... \$200
- Additional Table ..... \$100
- Additional Staff ..... \$50 per member
- Distribution of Marketing Materials ..... \$300

## Distribution of Marketing Materials

If a representative of your company is unable to attend the conference you may send information for distribution at the event. You will need to send 600 copies of your materials or product samples to the Grand Traverse Resort no more than 5 days prior to the conference. Please note that you may incur additional freight charges. Please contact MPHl at [cstarmar@mphi.org](mailto:cstarmar@mphi.org) before shipments are made.

## Exhibitor Check-In:

All exhibitors must register at the conference registration desk before setting up their exhibit. Packets will be provided upon check-in.

## Exhibit Hours:

Exhibits will be open on Thursday, August 13 from 8:00 a.m. to 5:00 p.m. AND Friday, August 14 from 8:00 a.m. to 2:30 p.m.

Networking will take place before and after sessions and during meals.

## Installation and Removal:

The exhibit area will be open for installation on Wednesday, August 12 from 3:00 p.m. to 5:00 p.m. and Thursday, August 13 from 6:00 a.m. to 8:00 a.m. All exhibits should be operational by 8:00 a.m. on Thursday. Dismantling should not start before 1:30 p.m. on Friday.

## Assignment of Space:

You will receive approval to participate in the conference within 5 business days of receiving your application. Payment is due before the conference. Space will be assigned in the order in which registrations are received. A letter confirming your exhibit space will be sent two weeks before the conference. Additional tables are available at an additional charge of \$100 (if space allows); unless otherwise requested, all exhibitors will receive one 6' x 3' table.

## Fees and Reservations:

To participate, please click the exhibitor registration link. Checks should be made payable to Michigan Public Health Institute (Fed I.D. #38-2963835). Credit card payment is available. Please note, there are no refunds for cancellations or no-shows.

## Shipping:

Arrangements and expenses for the shipment of materials are the exhibitor's responsibility. A shipping form will be provided upon request. Please contact our office for detailed information to ensure that your packages are received in a timely manner.

## Liability:

Michigan Public Health Institute assumes no responsibility for any loss, injury, or damage occurring to an exhibitor or his/her property.

## Giveaways:

Giveaways will be awarded throughout the conference. If you are interested in providing an item, please contact Corey Starmar at [cstarmar@mphi.org](mailto:cstarmar@mphi.org).

**CLICK HERE FOR  
EXHIBITOR  
REGISTRATION**

# Submission & Payment

## Payment Information

Fees for registration must be paid in full prior to the event date. Please note, there are no refunds for cancellations or no-shows. For questions regarding payment, please contact us at [events@mphi.org](mailto:events@mphi.org).

## Paying by Credit Card

To pay via credit card please login to your account at [eventsquid.com](https://eventsquid.com). More information is included in your confirmation email.

Please note: in order to protect your data, we are unable to process credit card payments over the phone.

## Paying by Check

To make payments by check, make checks payable to **Michigan Public Health Institute**. Please reference the HOST'S EIN/TAX ID and the CONFIRMATION NUMBER from the invoice on your check.

Mail to: MPHI—Home Visiting  
Attn: Accts Payable  
2436 Woodlake Circle, Suite 300  
Okemos, MI 48864

Please allow at least two weeks for the check to be received and processed. Once payment has been accepted you will receive a receipt of payment.

## Form Submission

The Exhibitor Registration form can be completed online by clicking the button on this page. To ensure inclusion in the conference marketing materials, your registration must be received by **July 10, 2026**.

Please contact Corey Starmer with any questions at [cstarmer@mphi.org](mailto:cstarmer@mphi.org).



**CLICK HERE FOR  
EXHIBITOR  
REGISTRATION**

**Registration Deadline:  
July 10, 2026**

# Overnight Accommodations

The host hotel for the 2026 Michigan Home Visiting Conference is:

Grand Traverse Resort  
100 Grand Traverse Village Boulevard  
Acme, MI 49610  
231-534-6000

## Rate:

Hotel guestroom: **\$239.00**

Tower guestroom: **\$269.00**

*All overnight rooms also have a **\$20.95/per night** resort fee*

## Reservations

Reservations must be received by **Saturday, July 11, 2026** to receive the group rate.

To obtain the special overnight rate and to reserve your room, [book online](#) or call Grand Traverse Resort at 231-534-6001 and mention that you are with the 2026 Michigan Home Visiting Conference.

Conference attendees and exhibitors are responsible for their own individual room reservations and cost.

